



Achieving hygiene excellence just got a whole lot easier

Meritech automated hygiene technology is now available through SPS CleanTech



CleanTech® Automated Handwashing Stations



Hygiene Solutions



Automated Footwear Hygiene Stations

Achieve Employee Hygiene Excellence

Eliminate the variability of human behavior as a cross-contamination risk



Effective

Clinically proven to remove more than 99.9% of harmful pathogens with each 12-second hand wash



Easy to Use

Standardizes the hygiene process and makes compliance monitoring documentation effortless



Eco-Friendly

Uses up to 75% less water and produces less waste while maximizing energy efficiency



A match made in hygiene heaven.

Meritech products are now available through SPS CleanTech.



PN: ELF

CleanTech® ELF

Compact unit for low volume traffic areas



PN: ELF-C

CleanTech® ELF-C

Compact unit that may be installed in any counter surface



PN: 500

CleanTech® 500

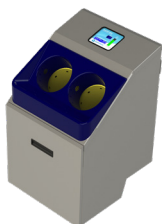
Smallest Industrial model designed for wall mount



PN: 500-C

CleanTech® 500-C

Compact system to be mounted in-counter



PN: 500EZ

CleanTech® 500EZ

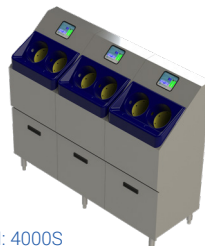
Wall-mounted industrial handwashing system



PN: 2000S

CleanTech® 2000S

Free-standing industrial station with self-cleaning feature



PN: 4000S

CleanTech® 4000S

Multi-bay station for high volume industrial areas

CleanTech® Enhancements

Complete your hygiene zone with enhancement options designed to support efficient throughput and optimal contamination control.



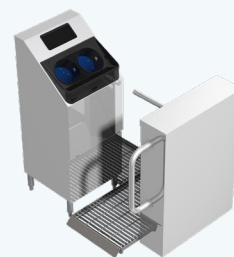
PN: 2000S-SC & 4000S-SC

Sole Clean

Low-Moisture Sanitizing Pan

Available on:

CleanTech® 2000S & 4000S



PN: 2000S-CA

Controlled Access Turnstile

Available on:

CleanTech® 2000S

Integrated Air Curtain Option -

Available on:

CleanTech® 500EZ, 2000S, 4000S

Allows for user to pre-dry hands and get drip free prior to using paper towels or secondary dryer



UltraPure

PN: 202 & 202-10L



SelfClean

SelfClean

PN: 301



Sanifect D2

Sanifect D2

PN: 501-20L

